

SonoMe

bionet

Wireless Handheld Ultrasound Scanner



**Go Wireless,
Scan Easy.**

All set with SonoMe!

Get ready to scan with SonoMe anywhere, anytime you want

Free from wired workflow

Get SonoMe paired wireless even without the internet to get ready for ultrasound scanning anytime, anywhere

Achieve High Image Quality

Uncompromising image quality with clear edges that users can count on



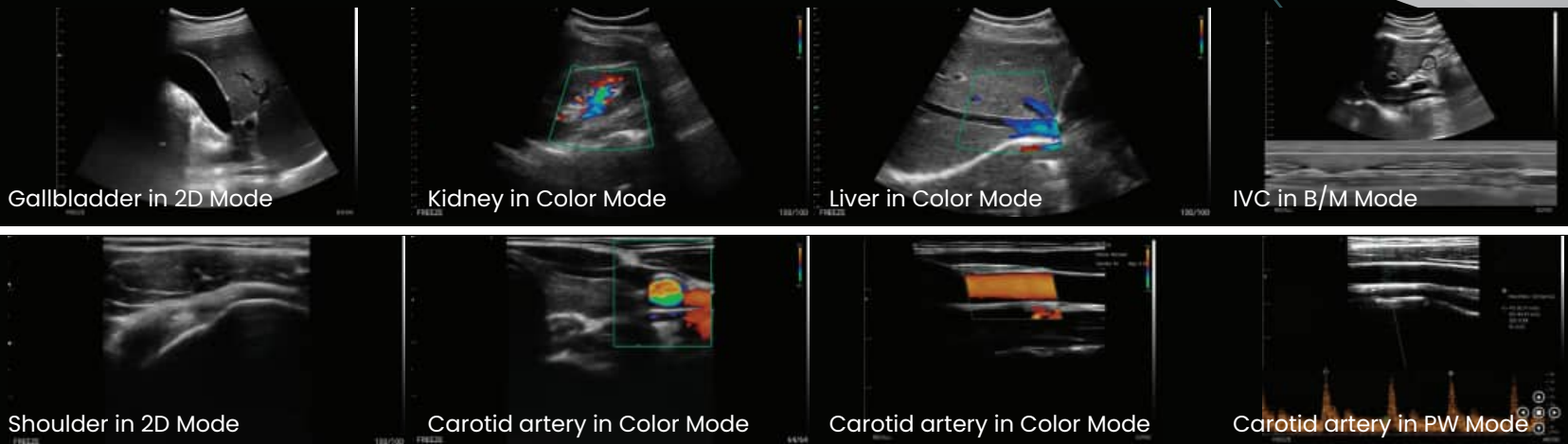
Clinical Versatility

Choose any of 8 models to optimize your clinical needs to see, find and support diagnosis and treatments

- * Only medical professionals should operate the SonoMe wireless ultrasound scanner
- * Only an authorized facility or vehicle can apply for and house SonoMe
- * Avoid the presence of a flammable anesthetic mixture with air, oxygen or nitrous oxide
- * Please contact an authorized sales representative for further information

✔ Experience the life-size product!

Fully loaded system for your versatile clinical needs



■ Fully Loaded System

- B, B/M, Color, PDI, PW modes are integrated in the SonoMe Pro App
- Image optimization, measurements & annotations
- Image storage to JPG, MP4 to paired mobile devices



■ Pursuing Ultrasound near You

- Download the SonoMe Pro App from the Android or iOS App stores
- No additional cost for application activation, registration, or adding users











■ Powerful Battery Operation

- From 2.5 hrs up to 5 hrs operation *

* Battery operation was measured by 1:2 duty cycle (ON 5 min / OFF 10 min)



SonoMe Specifications

Model	Transducer	Ele. / Freq. / Mode	Application
	H5C10L Dual Head	192 elements Linear 7.5 - 10 MHz Convex 3.2 - 5 MHz B, B/M, Color, PDI, PW	Abdomen, OB, GYN, Peripheral vessel, Superficial organ
	H5C Curved Array	192 elements 3.2 - 5 MHz B, B/M, Color, PDI, PW	Abdomen, OB, GYN
	H10L Linear Array	192 elements 7.5 - 10 MHz B, B/M, Color, PDI, PW	Peripheral vessel, Superficial organ
	5C Curved Array	128 elements 3.2 - 5 MHz B, B/M, Color, PDI, PW	Abdomen, OB, GYN
	10L Linear Array	128 elements 7.5 - 10 MHz B, B/M, Color, PDI, PW	Peripheral vessel, Superficial organ
	14L Linear Array	128 elements 10 - 14 MHz B, B/M, Color, PDI, PW	Peripheral vessel, Superficial organ
	5CB Curved Array	128 elements 3.2 - 5 MHz B, B/M	Abdomen, OB, GYN
	10LB Linear Array	128 elements 7.5 - 10 MHz B, B/M	Peripheral vessel, Superficial organ

Go Wireless, Scan Easy.

- Free from wired workflow**
 With a compact & lightweight design
- Uncompromising image quality**
 Achieve cart-based system image quality
- All modes in your hands**
 Fully loaded ultrasound scanning modes
- Covering wide applications**
 Choose from 8 models for wide range of applications
- Powerful battery operation hour**
 From 2.5 up to 5 hrs



2023 Bionet Co., Ltd. All right reserved.
 Products & specifications mentioned in this material is subject to change and might not be available in all countries.
 Please contact the sales representative for further information.

E-Mail info.sales@ebionet.com
 Website www.sonome.com www.ebionet.com



* Please scan QR code for detail specifications