

## Multi-Purpose Heater / Dry Bath WD320



WIGGENS® dry block heaters are highly versatile suitable for broad range of applications.

- > DNA extractions
  - > DNA analysis
  - > Melting point determination
  - > Nucleic acid hybridization
  - > Coagulation studies
  - > Biochemical processes
  - > Incubation and activation of cultures
  - > Blood examinations
  - > Fertile ground processing
  - > Restriction digest
  - > Denaturation
  - > Boiling point determination
  - > Enzymatic processes
  - > Enzyme activity studies
  - > Blood-urea-nitrogen determinations
  - > Immunoassays
  - > Enzyme reactions
  - > In situ hybridization
- Microprocessor control

The built-in unique microprocessor can provide precise temperature control for a variety of biochemical experiments.

- Heating chamber in one piece

Heating chamber is made of one-piece aluminum with PTFE coating and can work as a small water bath.

- Various optional heating blocks

Various types of heating block are available for option, and customized block is optional.

- Three types of timer modes

OFF, OFF-TIME, and WAIT-TIME

- Certification

CE certification

- Applications

Molecular biology

Biochemistry

- Precise temperature control!

Rapid heat up speed

Exceptional temperature uniformity

External PT 100 temperature sensor included

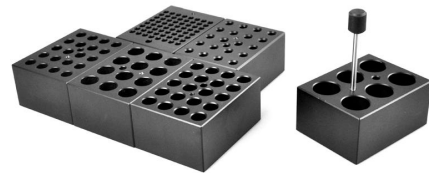
## Specifications

Model	WD320
Order No.	179320
Temperature setting range [°C ]	50.0~150.0
Temperature setting range with E-sensor [°C ]	40.0~150.0
Safety temperature [°C ]	Cut off at 170.0
Temperature stability [°C ]	±0.1
Temperature accuracy [°C ]	±0.1
Time setting [min]	1~9959 / off
External temperature sensor	Pt100
IP code	IP21

Temperature display	LED display
Temperature setting	Touch button
Number of heating blocks × (block size W×L×Hmm)	2×(79×104×50)
Dimensions W x D x H [mm]	200 x270 x80
Weight [kg]	2.8 (W/O the block)
Power supply	220V/50Hz,2A

### Heating Blocks for WD310 and WD320

Order No.	Size	Number of Holes	Ø x H (mm)
179300-01	0.2mL	64	6x17mm
179300-02	0.5mL	20	8x25mm
179300-03	1.5mL(or2.0 )	20	11x35mm
179300-04	10mL	20	10x33mm
179300-05	13mL	20	13x36mm
179300-06	20mL	12	20x48mm
179300-07	25mL	6	25x45mm
179300-10	17mL	12	17x44mm



WIGGENS GmbH

Wiescher Str. 11-13 // Haus 3

42277 Wuppertal Germany

Tel: 0049 202 373 29 58 – 0

WIGGENS China

Room 426, Hall A, Office Building M8, No.1 Jiuxianqiao

East Road, Chaoyang District, Beijing 100015, China

Tel: +86 400-809-2068

Fax: +86 400-809-2068-112

Email: [info@wiggens.com](mailto:info@wiggens.com)    [service@wiggens.com](mailto:service@wiggens.com)

Website: [www.wiggens.com](http://www.wiggens.com)